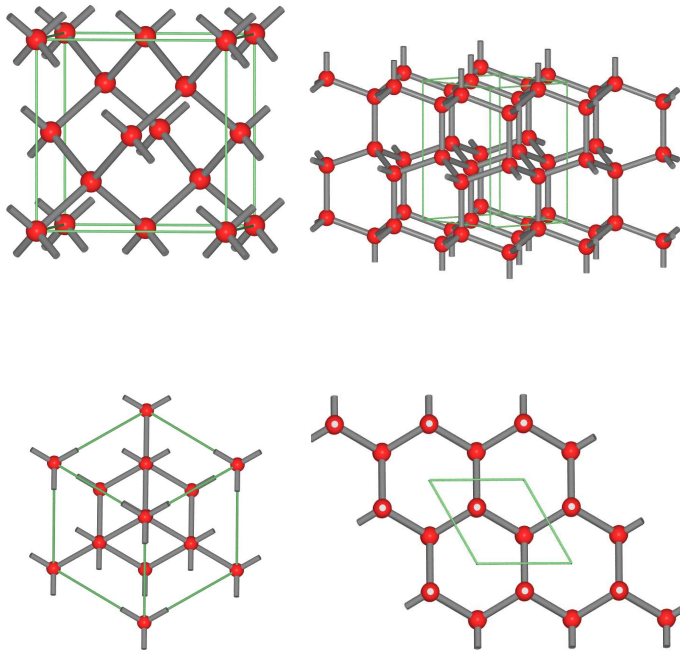


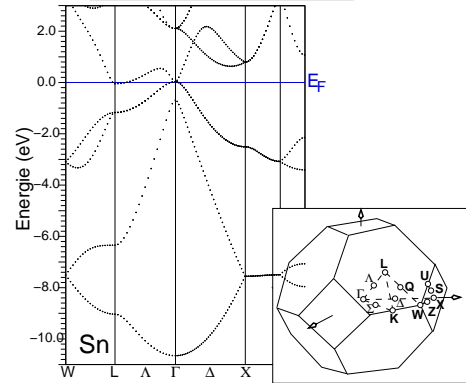
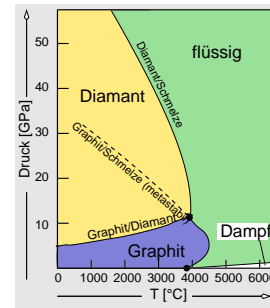
2.2.5. Tetrele



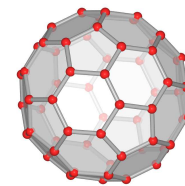
Diamant (kubisch)

Diamant (hexagonal)

Element (Modifik.)	$d_{X-X}$ [pm]	$E_g$ bei 0 K [eV]
C (Diamant)	154.5	5.4 (i)
C (Graphit)	141.8/335	
C <sub>60</sub>	139/145	
Si	235.2	1.17 (i)
Ge	245	0.744 (i)
Sn ( $\alpha$ )	280	0 (d)

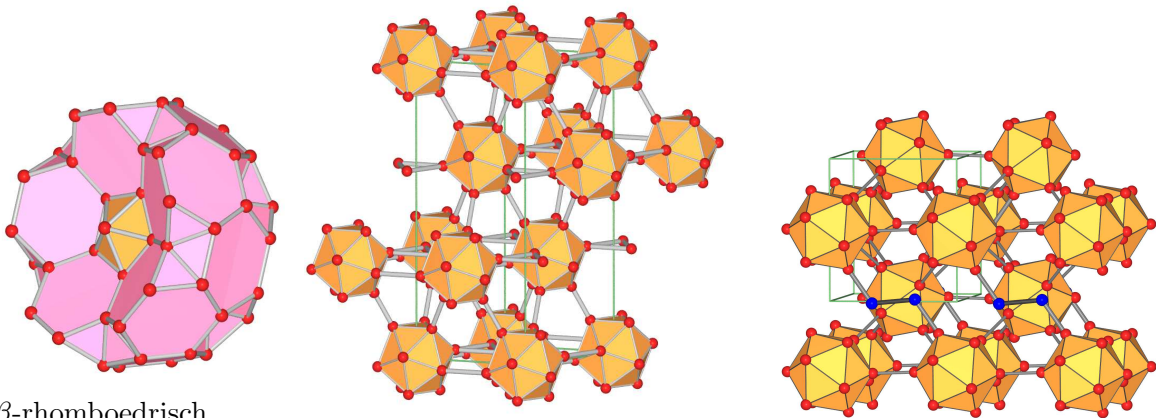


Bandstruktur von  $\alpha$ -Sn



C<sub>60</sub>

2.2.6. Bor



$\beta$ -rhomboedrisch (Baelement)

$\alpha$ -rhomboedrisch

B<sub>28</sub>

2.3. Kovalente Verbindungen

2.3.2. Isostere zu den Elementen der IV. Hauptgruppe

	N	P	As	Sb
B				
Al				
Ga				
In				

Übersicht III-V-Verbindungen

	O	S	Se	Te
Be				
Mg				
Ca				
Sr				
Ba				
Zn				
Cd				
Hg				

Übersicht II-VI-Verbindungen

- Zinkblende (Diamant)
- Wurtzit (hex. Diamant)
- hex. BN (Graphit)

- Zinkblende (Diamant)
- Wurtzit (hex. Diamant)
- NaCl
- Zinnober